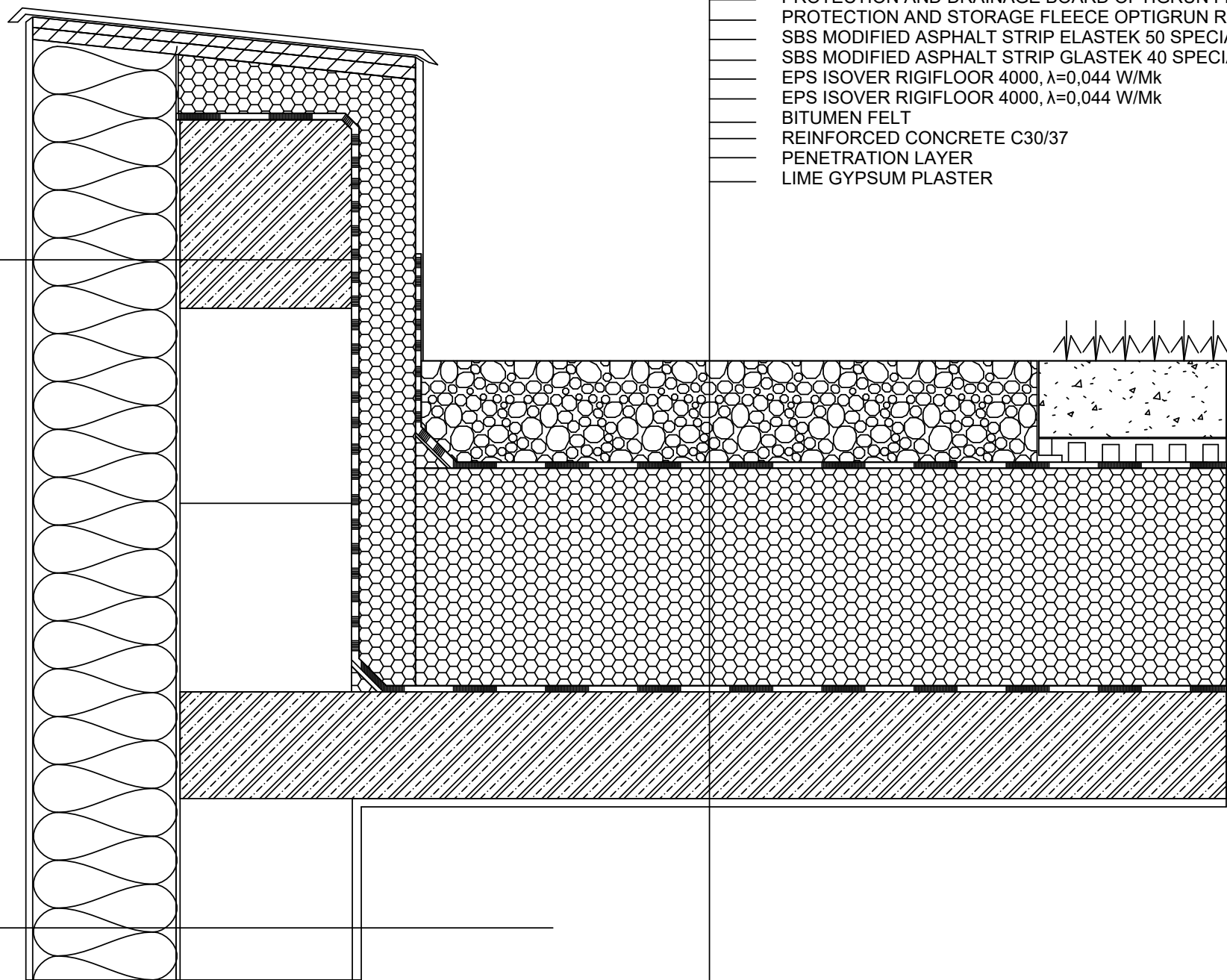



HYDROINSULATION LAYER PVC-P FOIL  
EPS ISOVER EPS GREYWALL PLUS,  $\lambda=0,031$  W/Mk  
CEMENT BASED ADHESIVE  
VAPOR INSTALLATION ASPHALT LAYER  
ASPHALT PENETRATION LAYER  
REINFORCED CONCRETE RING, C30/37, B500B  
CEMENT BASED ADHESIVE BAUMIT BAUMACOL FLEXUNI  
EPS ISOVER EPS GREYWALL PLUS,  $\lambda=0,031$  W/Mk  
CEMENT BASED ADHESIVE BAUMIT STARCONTACT  
BAUMIT GRUND  
EXTERNAL LIME-CEMENT PLASTER BAUMIT FL 68

PAINT  
INTERNAL LIME-CEMENT PLASTER BAUMIT FL 68  
BAUMIT GRUND  
MASONRY FROM POROTHERM 30 P10,  $\lambda=0,170$  W/Mk  
CEMENT BASED ADHESIVE BAUMIT BAUMACOL FLEXUNI  
EPS ISOVER EPS GREYWALL PLUS,  $\lambda=0,031$  W/Mk  
CEMENT BASED ADHESIVE BAUMIT STARCONTACT  
REINFORCING FIBRE GLASS MESH BAUMIT STARTEX  
BAUMIT GRUND  
EXTERNAL LIME-CEMENT PLASTER BAUMIT FL 68



VEGETATION  
VEGETATION SUBSTRATE  
FILTRATION FLEECE OPTIGRUN FILTER FLEECE FIL 300  
PROTECTION AND DRAINAGE BOARD OPTIGRUN FKD 25  
PROTECTION AND STORAGE FLEECE OPTIGRUN RMS 300 FLL APPROVED  
SBS MODIFIED ASPHALT STRIP ELASTEK 50 SPECIAL DEKOR, BLACK  
SBS MODIFIED ASPHALT STRIP GLASTEK 40 SPECIAL MINERAL  
EPS ISOVER RIGIFLOOR 4000,  $\lambda=0,044$  W/Mk  
EPS ISOVER RIGIFLOOR 4000,  $\lambda=0,044$  W/Mk  
BITUMEN FELT  
REINFORCED CONCRETE C30/37  
PENETRATION LAYER  
LIME GYPSUM PLASTER

0,000 = 234.26 H.a.s.l., B.H.S / COORDINATE SYSTEM S-JTSK

COURSE	BACHELOR'S THESIS		
DRAWN BY	VEDAT DEMIRKIRAN		
SUPERVISED BY	Ing. JAN MÜLLER, Ph.D.		
INVESTOR	-		
LOCATION	KOMÍN, 624 00 BRNO. PARCEL NO. 2547/7		
PROJECT TITLE	RESIDENTIAL BUILDING		
BUILDING OBJECT	BO 01 RESIDENTIAL BUILDING	PAPER FORMAT	4xA4
PART	D.1.2 STRUCTURAL BUILDING SOLUTION	DATE	5/2024
DRAWING TITLE:		PROJ. PHASE	DPS
	DETAIL 1	SCALE	DRAWING NO.
		1:5	D.1.2.10